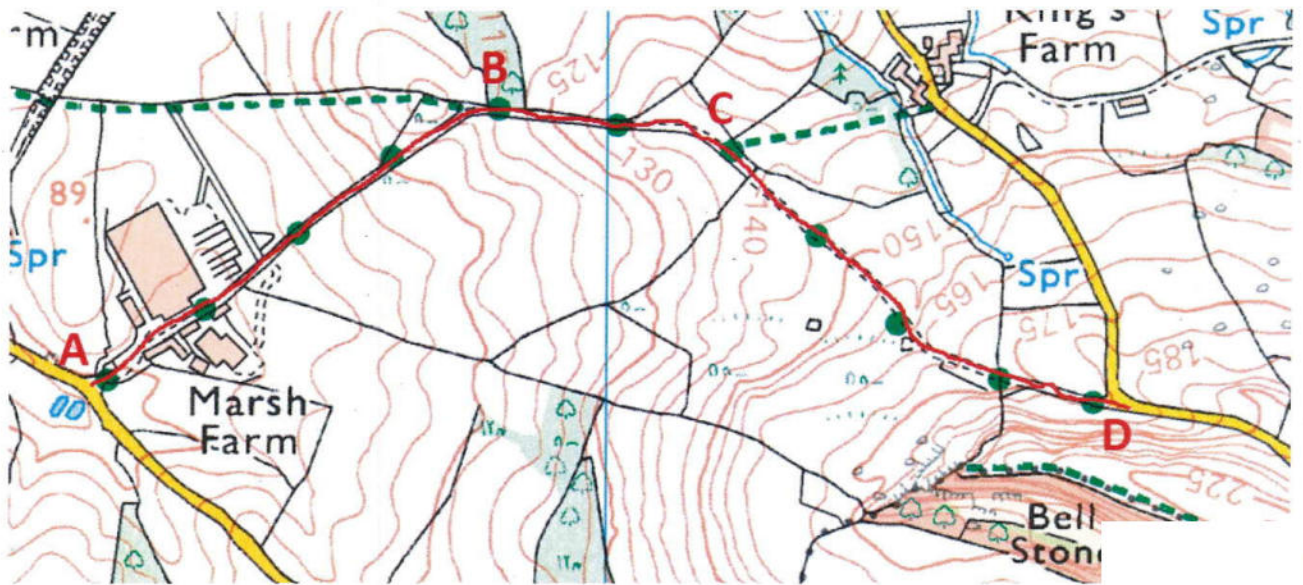


Wildlife and Countryside Act 1981

The Definitive Map and Statement of Public Rights of Way in Dorset

Map accompanying the DMMO application to:-

Add a bridleway for a route extending from Point A (at approximately SY 5239 9525) at the public road at Marsh Farm, extending north east to Point B (at approximately SY 5283 9559) at the eastern end of public footpath W 39/30, then to eastwards to Point C (at approximately SY 5313 9553) at the western end of public footpath W 39/27, then south eastwards to Point D (at approximately SY 5360 9523) where it joins the public road.



Signature Redacted

"This copy has been made by or with the authority of Dorset Council pursuant to section 47 of the Copyright, Designs and Patents Act 1988 ("the Act"). Unless the Act provides a relevant exception to copyright, the copy must not be copied without the prior permission of the copyright owner."